

# SUBMERSION PROBE HOLDER "PEC"

## Data Sheet

Submersion probe holder for pH / ORP Ø 12 probe, conductivity, ETORBH, EOLUM and ECDINDPT (inductive conductivity).

### PEC

Electrodes	pH, ORP Ø 12
Max temperature	80°C
Material	PP
Length	100 cm

### PEC/SN6

Electrodes	SN6 Ø12 threading PG 13.5
Other features as PEC	

### PEC/IM

Electrodes	conductivity (threading 3/4")
Other features as PEC	



PEC  
PEC/SN6  
PEC/IM

### PEC2

Elettrodi	Ø 12 threading PG 13.5
Max temperature	60°C
Material	PVC
Length	100 cm

**PECAP2** immersion self-cleaning probe holder with a compressed air or water cleaning fitting operated manually or, using a LD controller, automatically.

Electrodes	Ø 12 threading PG 13.5
Other features as PEC2	



PEC2  
PECAP2

**PECAP/SN6** immersion self-cleaning probe holder with a compressed air or water cleaning fitting operated manually or, using a LD controller, automatically.

Electrodes	SN6 Ø 12 threading PG 13.5
Max temp. / Pressure	40°C / 1bar
Material	PVC-PP

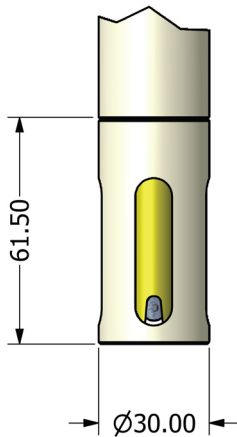


PECAP/SN6

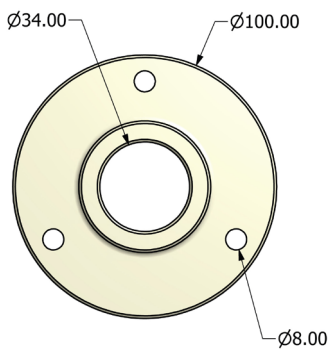
# SUBMERSION PROBE HOLDER "PEC"

Data Sheet

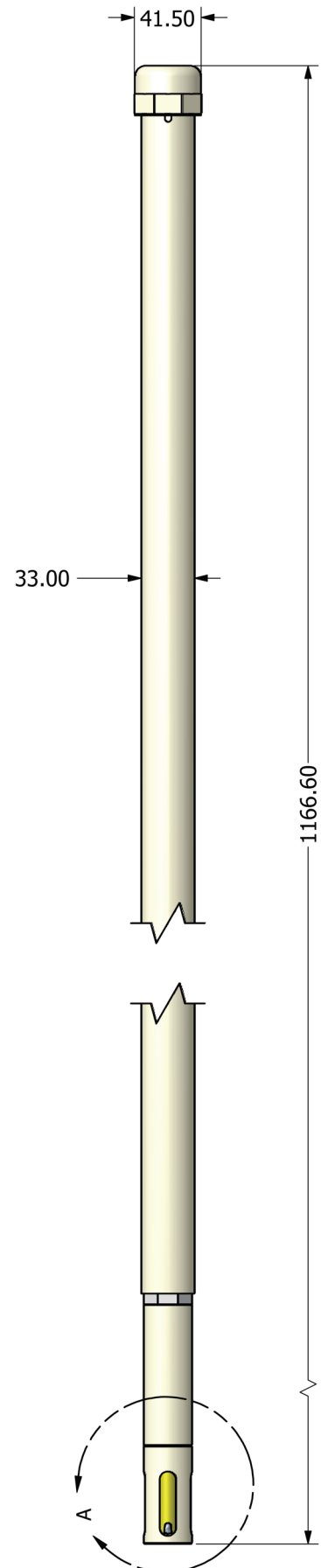
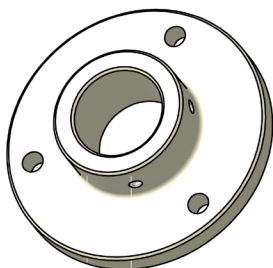
SUBMERSION PROBE HOLDER MADE OF PP  
FOR pH / REDOX PROBES INCLUDING SN6 (PG13.5) VERSION



With system to avoid "PEC" removing during probe calibration.



Tank adapter.



# SUBMERSION PROBE HOLDER "PEC"

Data Sheet

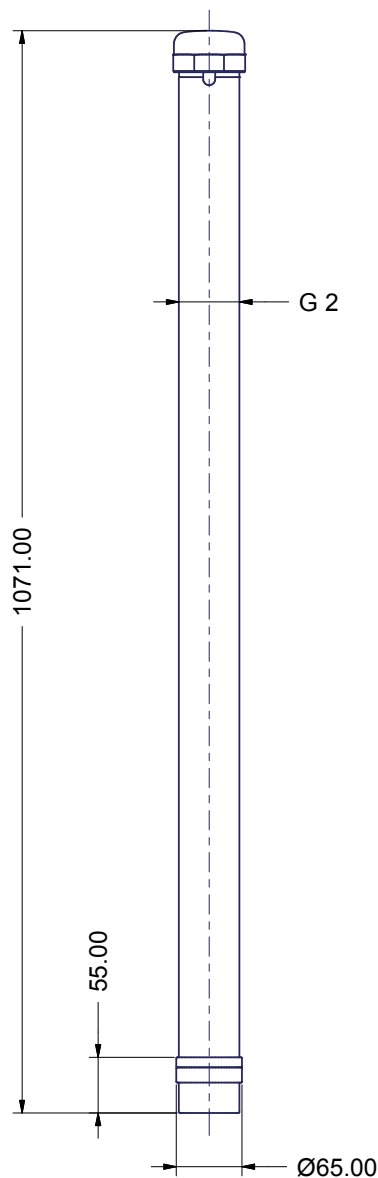
## PEC IND

Electrode	ECDINDPT
Max temperature	40°C
Material	PVC
Length	100 cm



PEC IND

## DIMENSIONS PEC IND (in mm)



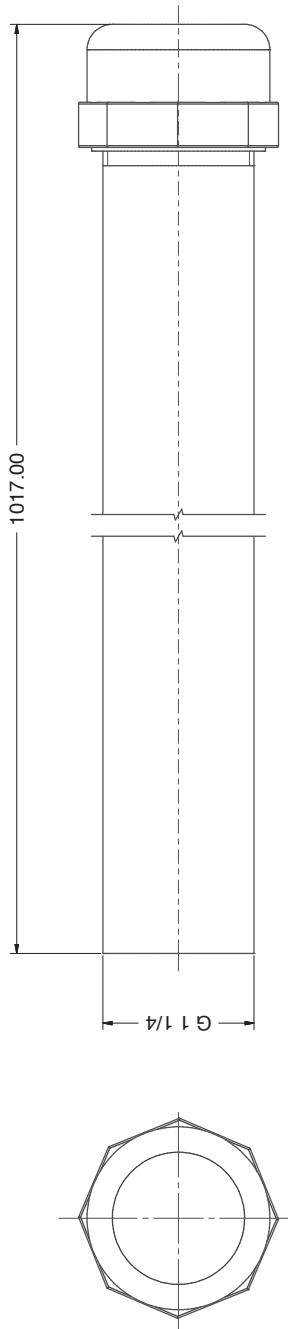
# SUBMERSION PROBE HOLDER "PEC"

Data Sheet

## PEC-E

Electrode	ETORBH or EOLUM
Max temperature	80°C
Material	PP
Length	100 cm

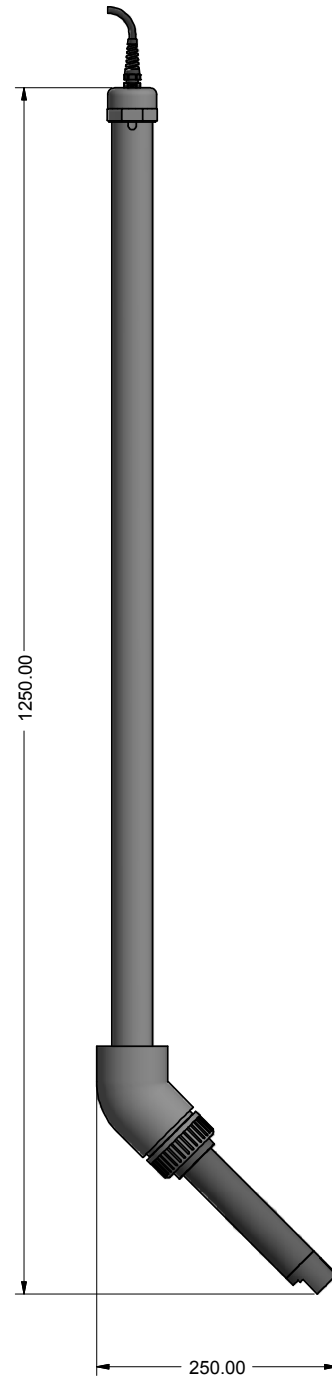
### DIMENSION PEC E (in mm)



## PEC-E2

Electrode	ETORB2
Max temperature	40°C
Material	PVC
Length	100 cm

### DIMENSION PEC E2 (in mm)



PECAP-E

