

SLL LASER LEVEL SENSOR

The SLL laser level sensor allows stable and reliable quantity detection of liquids in different sizes. It is also capable of detecting simply by distance, regardless of shape, color or surface finish. Shaft PVC made.

This feature makes this sensor ideal for detecting the quantity of products in the tanks without any dependence on density, viscosity, color or degree of transparency.

Available for CENTURIO series controllers (digital output) or LDLOG series (mA output).

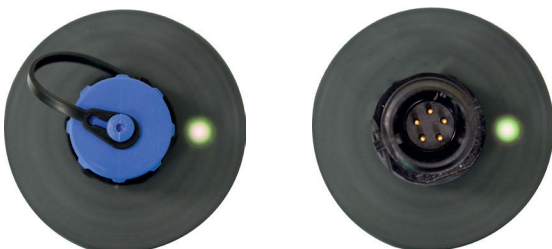
R2-06-20



TECHNICAL DATA

- > Laser Class II 635 nm, Power <1mW
- > Total current absorption 100 mA
- > 4 wires controller connection (A 485, B 485, 12VDC, GND)
- > **Communication with instrument via RS485**

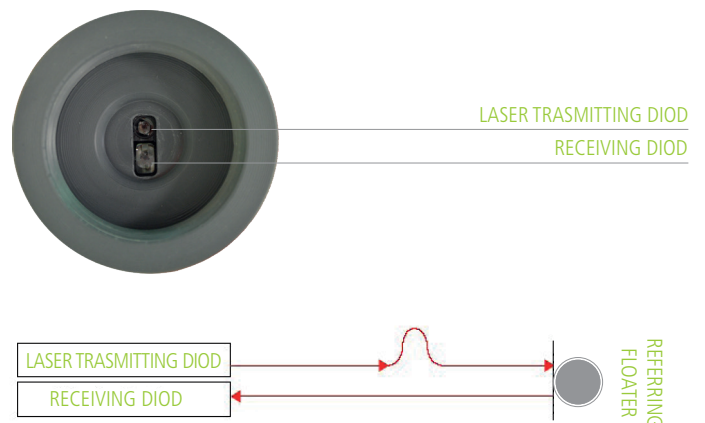
LED STATUS MESSAGES



The green LED shows the connection status as follows:

- > LED fast blinking: sensor not associated to controller
- > LED slow blinking: sensor connected, stanby mode
- > LED on: working sensor
- > Sample: 1 per minute / 10 seconds laser on
- > Working temperature: 0 - 40 °C (32 - 104°F)
- > Storage temperature: -25 - 60 °C (-13 - 140°F)

WORKING PRINCIPLE



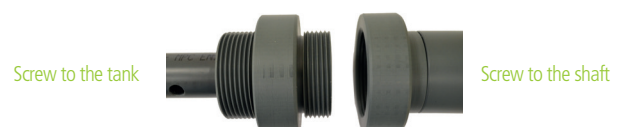
ELECTRICAL CONNECTION TO CONTROLLER

RS485

Warning: when in multiple installations, connect one sensor at a time. Install it ensuring that the sensor shaft has no obstacles that can alter laser reading.

SHAFT MECHANICAL CONNECTION

Insert and then screw the shaft to the tank and the sensor to the detection shaft in a clockwise direction.



SLL DIMENSIONS (MM)

- > SLL50 for CNTPD50
- >
- > SLL110 for CNTPD110
- >
- > SLL200 for CNTPD200
- >
- > SLL500 for CNTPD500
- >
- > SLL1000 for CNTPD1000

